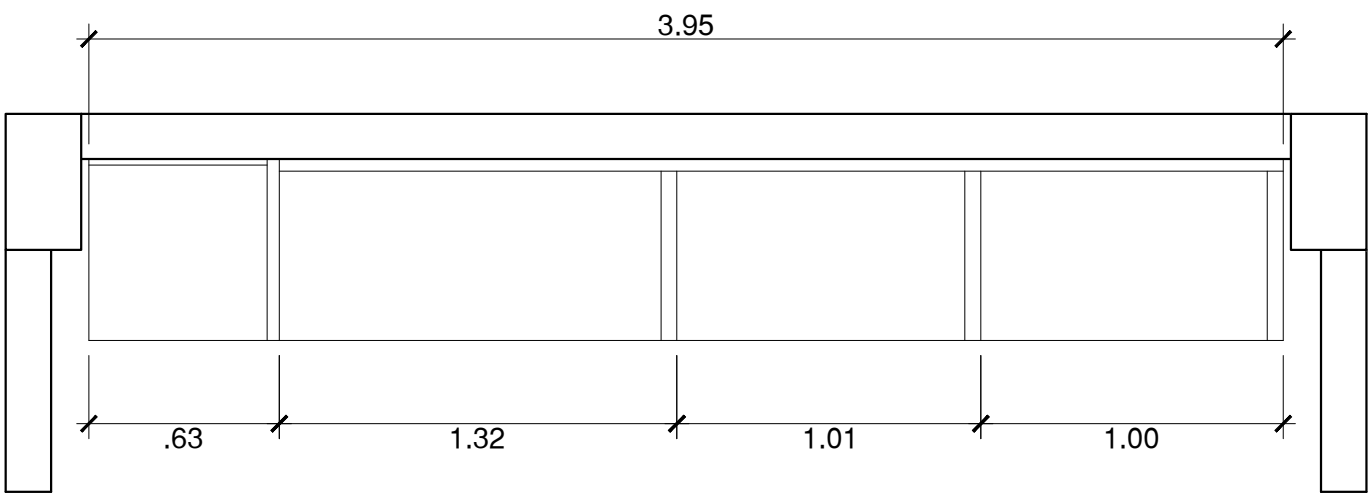
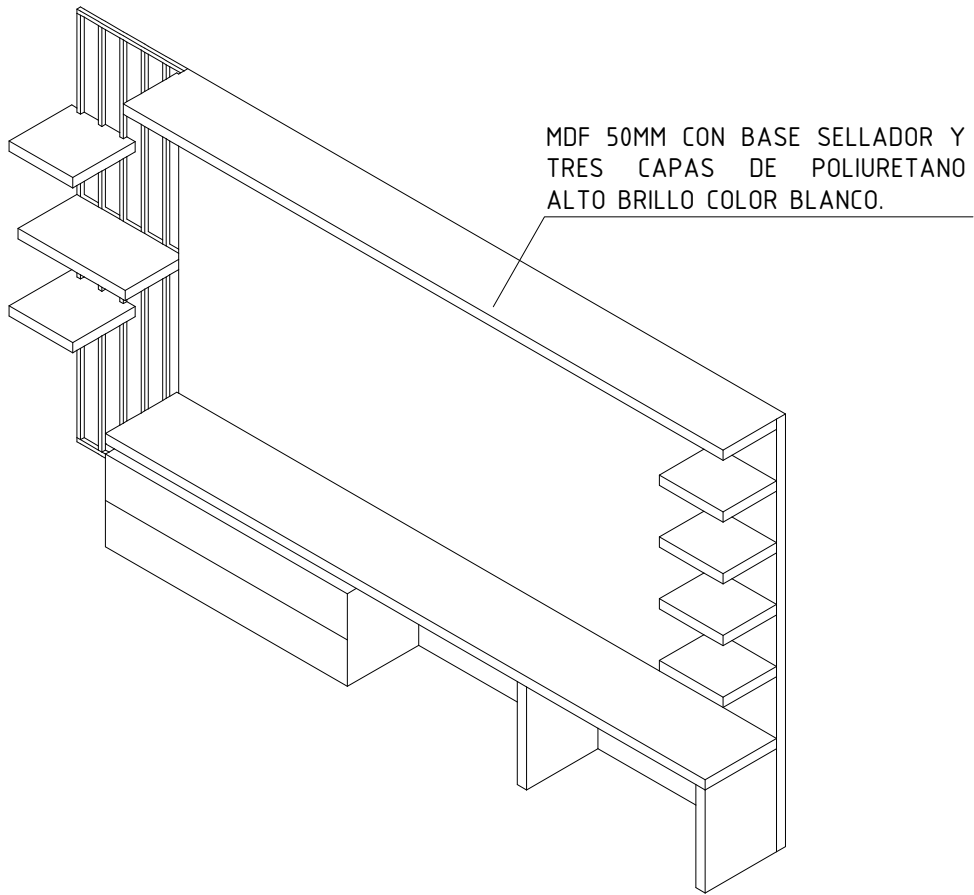
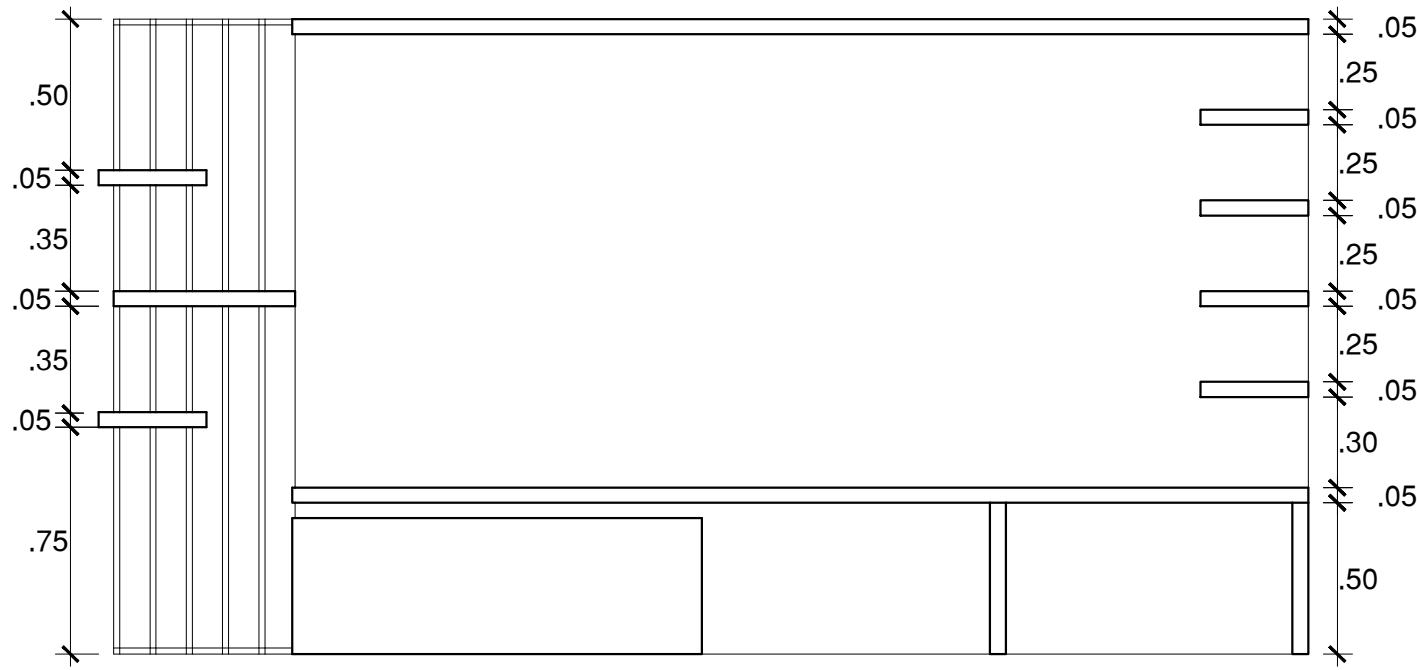


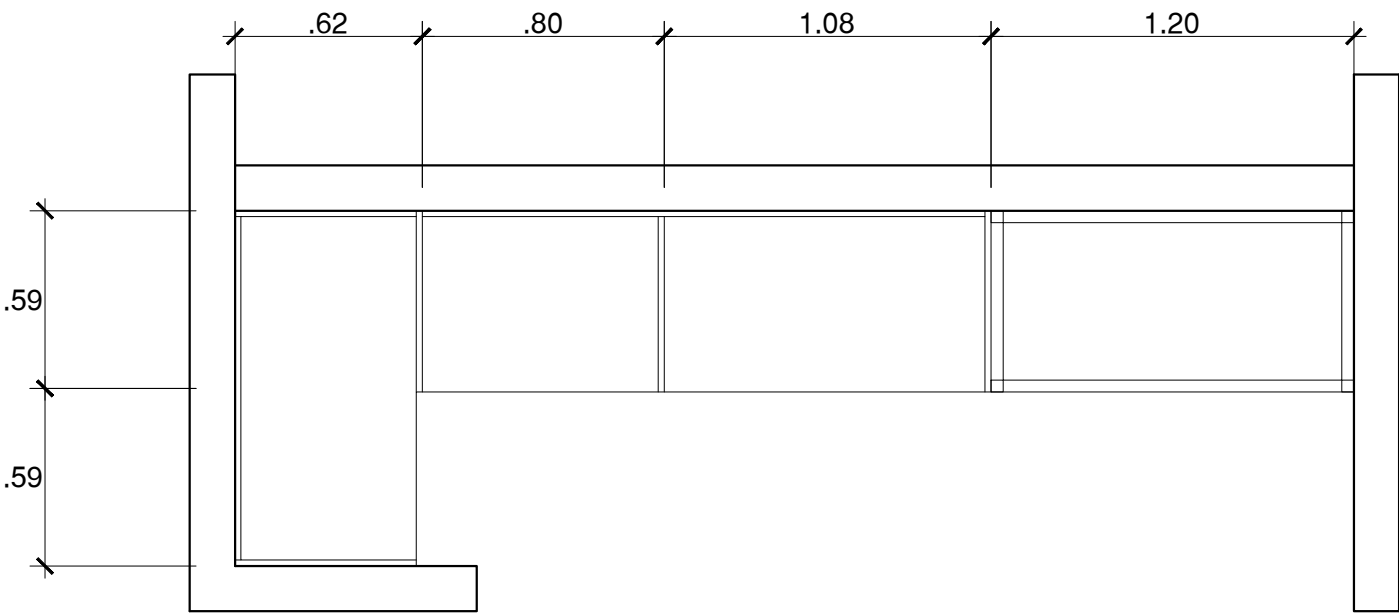
PLANTA C09



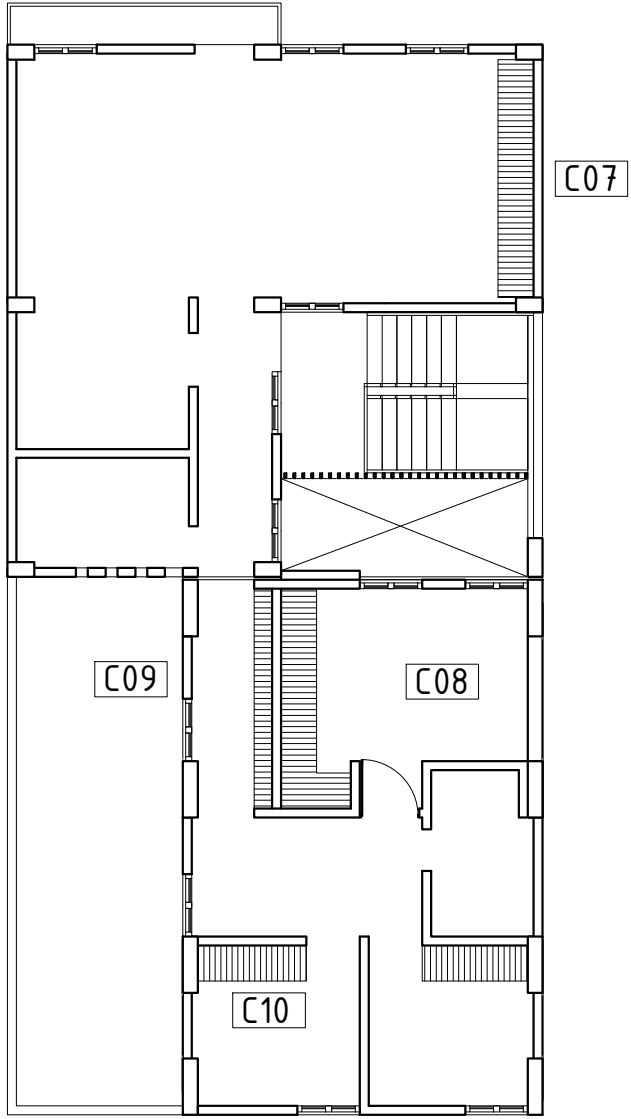
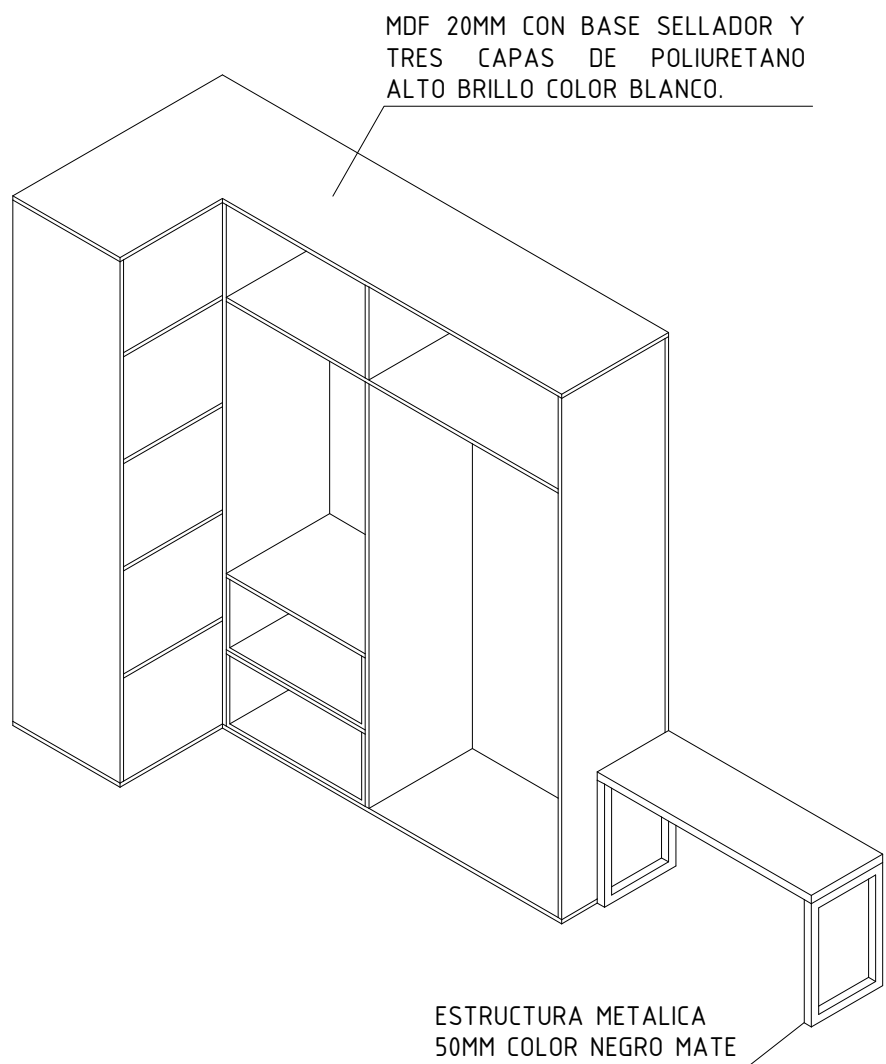
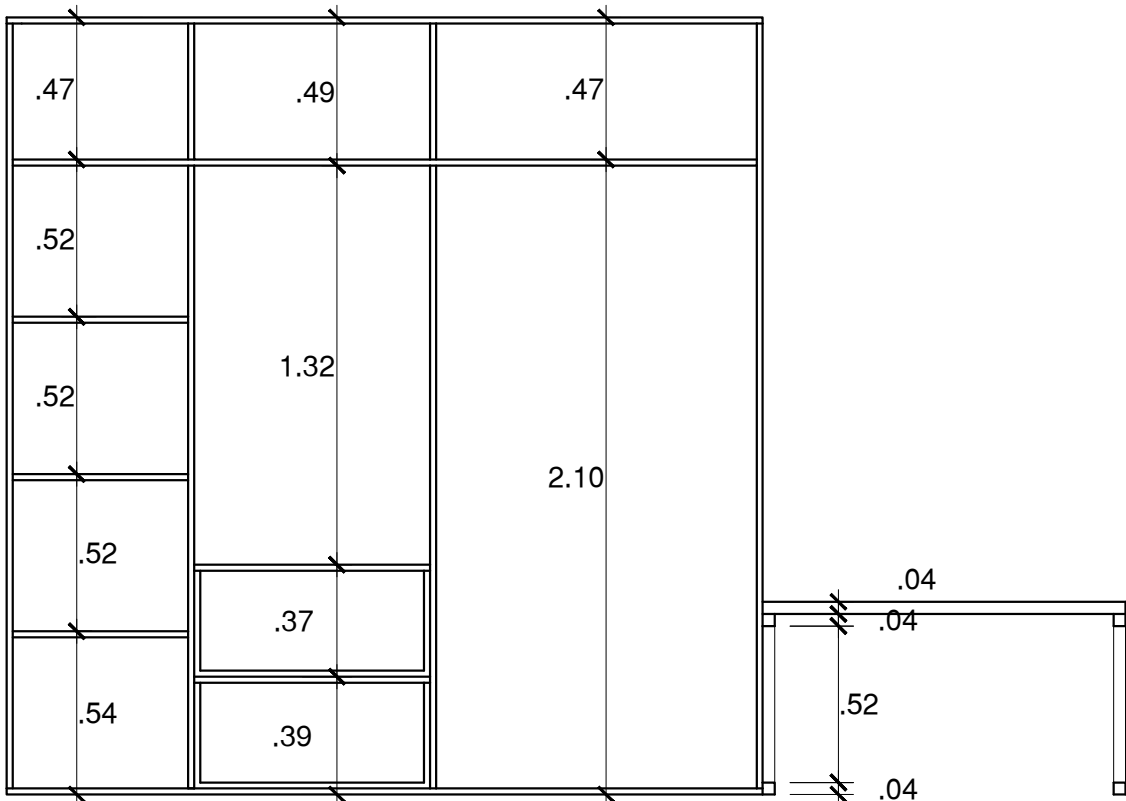
CORTE C09



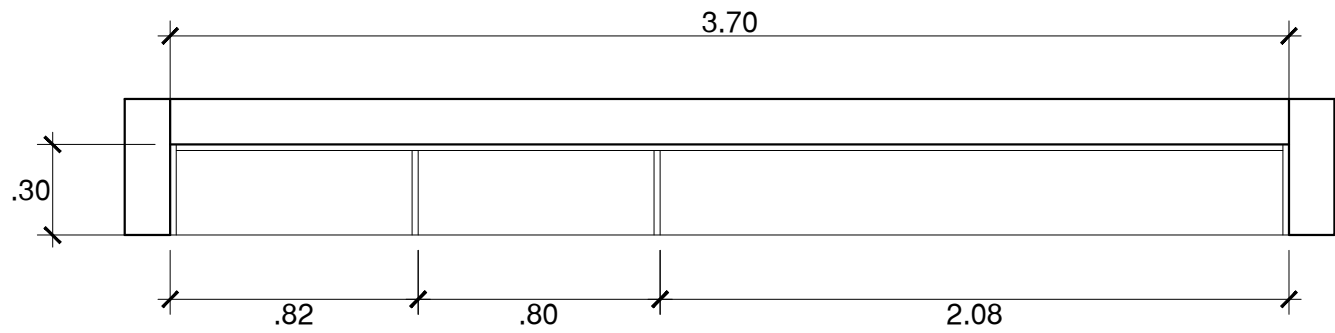
PLANTA C10



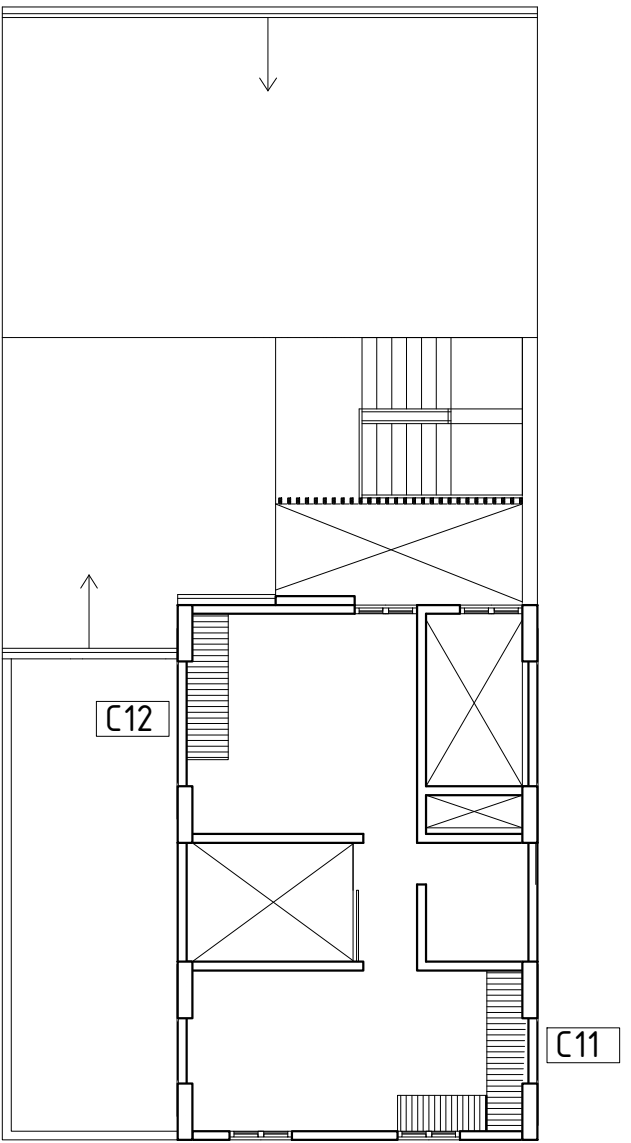
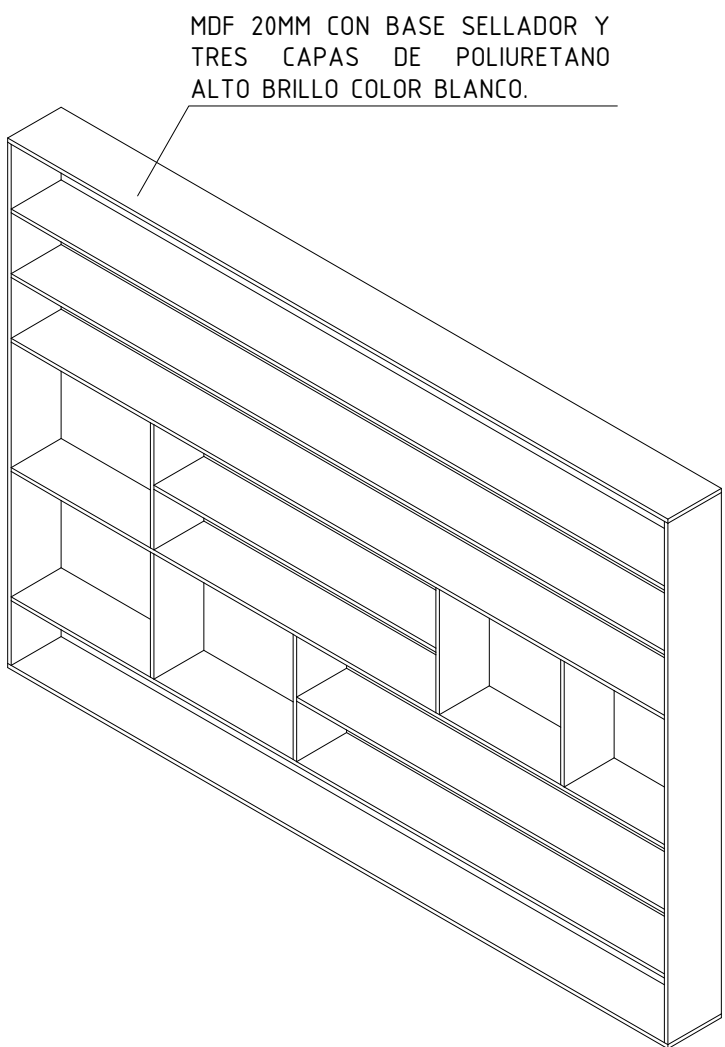
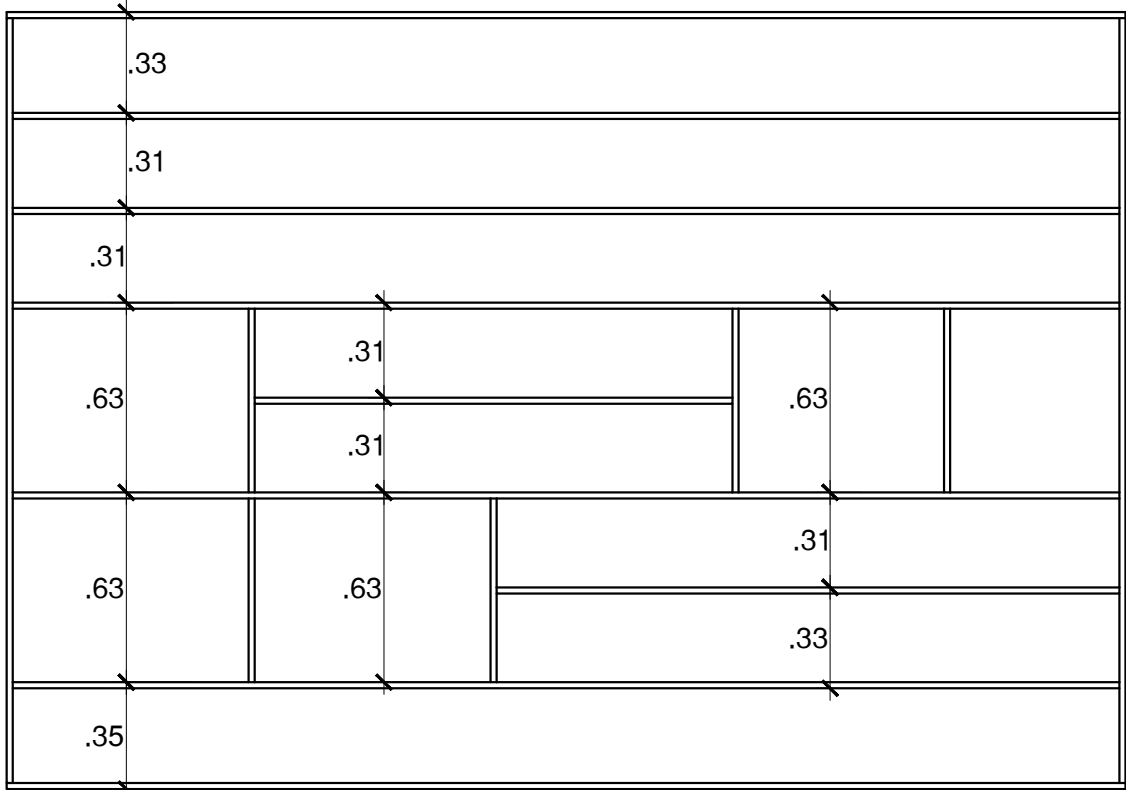
CORTE C10



PLANTA C11



CORTE C11



PROYECTO:
VIVIENDAS PRODUCTIVAS
Y PROCESADORA DE TRUCHA
HUARÁZ

ALUMNA:
VELÁSQUEZ LÓPEZ MARGARITA T.

DESCRIPCION:
DETALLE DE MUEBLES
VIVIENDA TIPO B

ESCALA:
1/25

FECHA:
JULIO 2021

PROFESIONAL RESPONSABLE:
ARQ. JORGE COSMÓPOLIS BULLÓN
ING. TOMAS CARRASCO ORELLANO
ING. LUIS ALBERTO RAMOS MARTINEZ
ING. JOSE CARLOS YAFAC RISCO

LAMINA:
D-15